

# Product Data Sheet

## Wall Mounting Kit for Adsorption Dryer

### DA-MFA-DPS1-8

Version: 1.1

Author: Matthias Schulte

Date: 28.05.2015

### Application

With the installation kits DA MFA DPS1-4 and DA MFA DPS6-8 the FST adsorption DPS1-4 or DPS6-8 can be easily mounted on a wall. Therefore the wall must have an appropriate load capacity (see table of dryer weights).

After mounting a final proof or audit for tipping, should be done by the operator. The wall brackets are not suitable for dynamic loads, such as those occur in or on vehicles.

### Scope of delivery

The mounting kit includes 2 of wall brackets, 2 washer 38/40 and 2 screws and washers, and as well mounting plates for fixing the dryer.

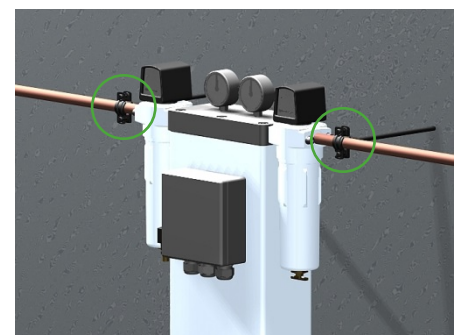
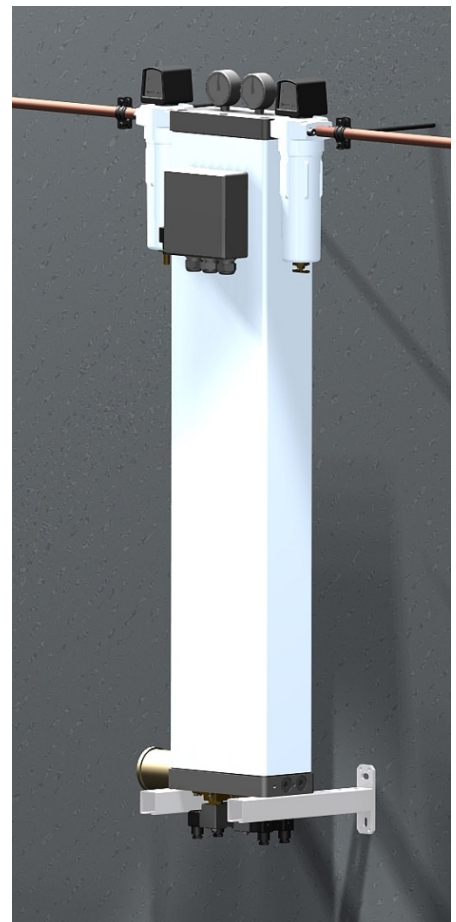
### Mounting

The wall bracket set is screwed to the dryer in same place as the standard fitted feet.

For the assembly / disassembly the dryer carefully be laid on the ground and possibly supported with wood block or equivalent.

For attachment to a wall bolts and screws or adhesive anchors and wall anchors must be selected by the operator (installer) for the corresponding stress case. FST recommends the use of composite anchors for mounting.

For the adsorption dryer sizes DPS7 and DPS8 we recommend to attach the inlet- and outlet pipe with suitable pipe clamps (not included) to the wall, so that the dryer cannot overturn.



# Product Data Sheet

## Wall mounting kit DA-MFS-DPS..

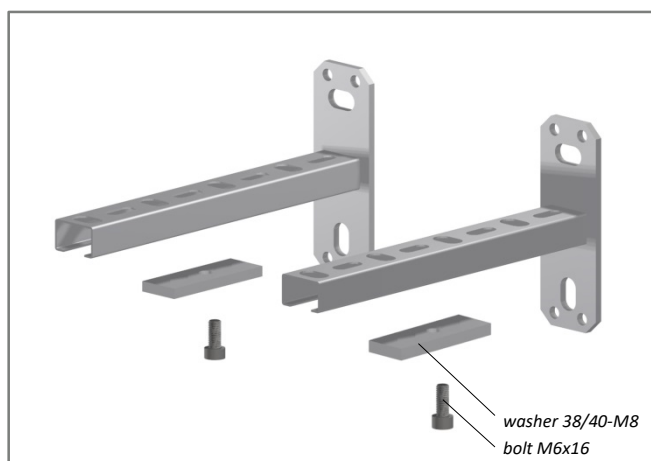
subject to technical changes

issued 06.05.2015

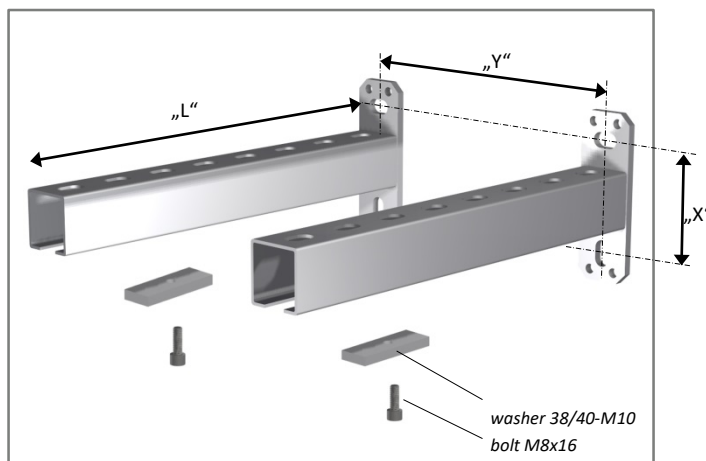
latest version under [www.fstweb.de](http://www.fstweb.de)

### Basic data

Mounting kit	Load capacity of both wall brackets together if center of gravity = „L/2“	Size	Weight
DA-MFA-DPS1-4	max. 110 kg	L = 200 mm	2x 0,38 kg
DA-MFA-DPS6-8	max. 200 kg	L = 300 mm	2x 0,74 kg



DA-MFA-DPS1-4



DA-MFA-DPS6-8

Adsorption Dryer	Weight	Anchor Bolts*	Borehole x Depth	Dim. „X“	Dim. „Y“
DPS1	11 kg	4 St. M8 x 60	Ø10 x 70	79 mm (± 4 mm by slotted holes 11 x 19 mm)	164 mm
DPS1A (BI/BM)	14 kg	4 St. M8 x 60	Ø10 x 70		262 mm
DPS2	15 kg	4 St. M8 x 60	Ø10 x 70		164 mm
DPS2A (BI/BM)	20 kg	4 St. M8 x 60	Ø10 x 70		262 mm
DPS3	20 kg	4 St. M8 x 60	Ø10 x 70		164 mm
DPS3A (BI/BM)	27 kg	4 St. M10 x 95	Ø12 x 110		262 mm
DPS4	25 kg	4 St. M10 x 95	Ø12 x 110		164 mm
DPS4A(BI/BM)	35 kg	4 St. M10 x 95	Ø12 x 110		262 mm
DPS6	45 kg	4 St. M10 x 95	Ø12 x 110		214 mm
DPS6A (BI/BM)	65 kg	4 St. M10 x 95	Ø12 x 110		342 mm
DPS7	54 kg	4 St. M10 x 95	Ø12 x 110		214 mm
DPS7A (BI/BM)	78 kg	4 St. M10 x 95	Ø12 x 110		342 mm
DPS8	62 kg	4 St. M10 x 95	Ø12 x 110		214 mm
DPS8A (BI/BM)	90 kg	4 St. M10 x 95	Ø12 x 110		342 mm

\*Anchor bolts according to “Fischer Highbond System®” (or comparable) suitable for concrete. Possibly other anchors must be elected for a calcareous sandstone- or bricks masonry.

Note the mounting kit is not suitable for mounting on drywall and plasterboard!