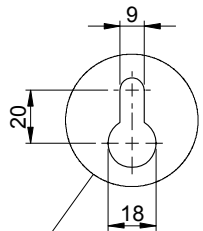
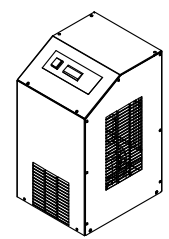
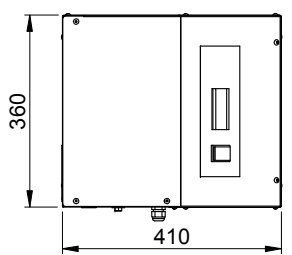
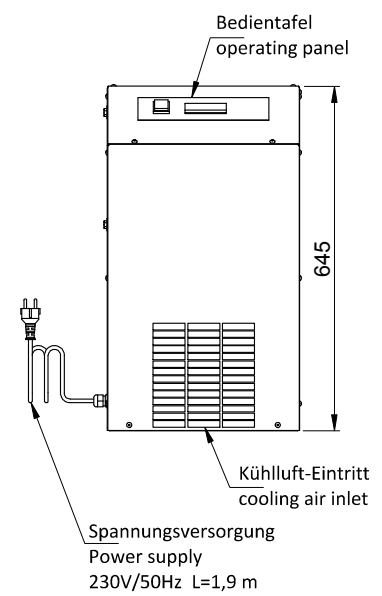
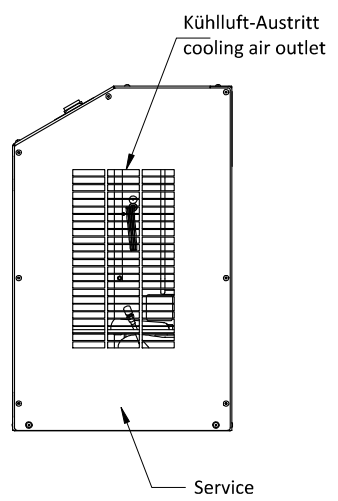
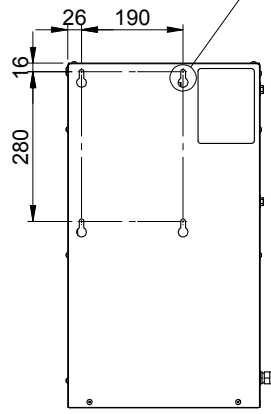
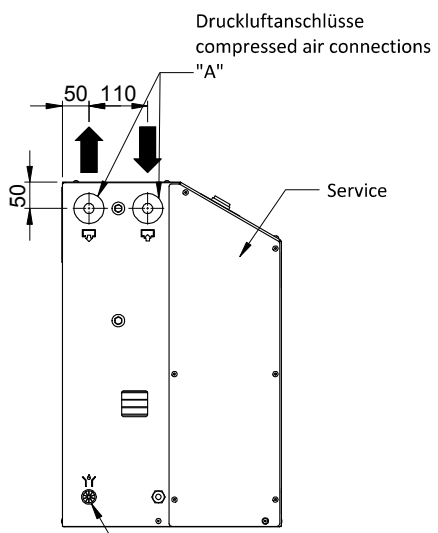



für Wandbefestigung
for wall mounting



Typ type	"A"	Gewicht weight	Max. Druck max. press.
DFX 4	G 1/2	25 kg	16 bar
DFX 5	G 1/2	26 kg	16 bar
DFX 7	G 1/2	28 kg	16 bar
DFX 9	G 1/2	32 kg	16 bar
DFX 11	G 1/2	32 kg	16 bar
DFX 13	G 1	34 kg	14 bar
DFX 15	G 1	34 kg	14 bar



Technische Änderungen vorbehalten !
Technical modifications are subject to change without notice, errors not excluded

Allgemeintoleranzen für Schweißkonstruktionen General tolerance for welded construction DIN 8570 / 1B	Allgemeintoleranzen General tolerance ISO 2768-m-k	Werkstückkanten Part edges DIN 6784	Maßstab / scale 1:10	Gewicht / weight	Format A3								
<table border="1"> <thead> <tr> <th>Datum</th> <th>Name</th> <th>Benennung / Titel</th> </tr> </thead> <tbody> <tr> <td>Gez. 07.03.11</td> <td>T.Tappe</td> <td rowspan="2">Kältetrockner DFX 4 - DFX 15 Refrigeration dryer DFX 4 - DFX 15</td> </tr> <tr> <td>Gepr. 07.03.11</td> <td>C.Ruff</td> </tr> </tbody> </table>			Datum	Name	Benennung / Titel	Gez. 07.03.11	T.Tappe	Kältetrockner DFX 4 - DFX 15 Refrigeration dryer DFX 4 - DFX 15	Gepr. 07.03.11	C.Ruff	Werkstoff / material		
Datum	Name	Benennung / Titel											
Gez. 07.03.11	T.Tappe	Kältetrockner DFX 4 - DFX 15 Refrigeration dryer DFX 4 - DFX 15											
Gepr. 07.03.11	C.Ruff												
 Filtrations-Separations-Technik			Zeichnungs-Nr. / Drawing no. ZMP-S-FD1131										
Rev.	Änderung / changes	Date	Name										