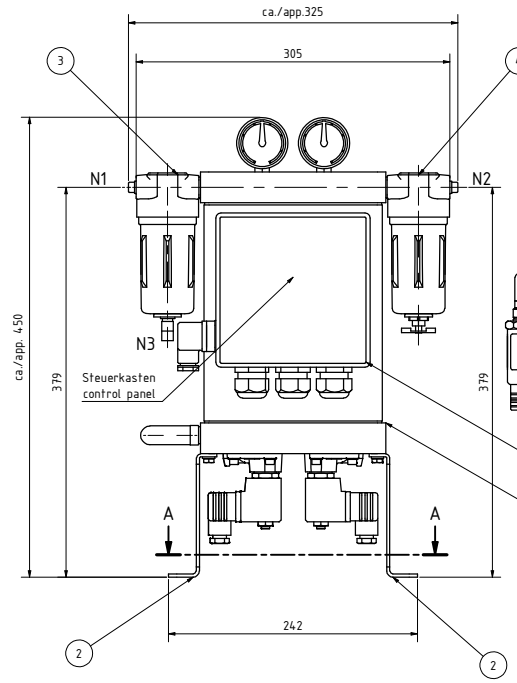
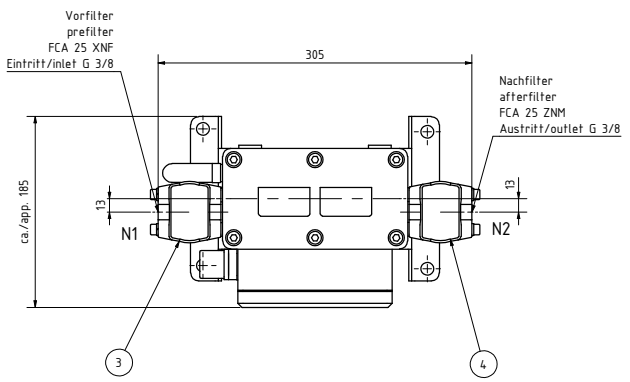
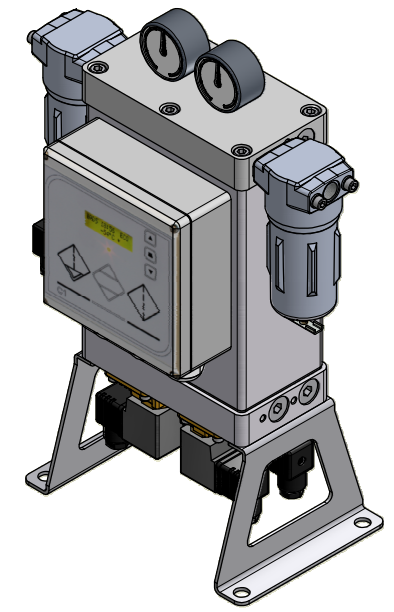
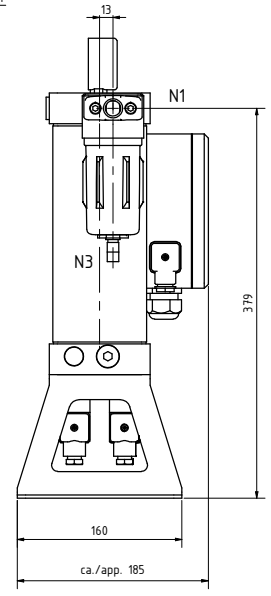


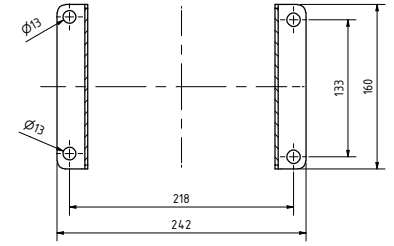
Pos	Stück	Benennung	Zeichnungs- / Artikel-Nr.	Gewicht
1	1	DPS 1		8,920 kg
2	2	Fuß DPS 1-4	ZME-S-00342	0,361 kg
3	1	Vorfilter FCA 25		0,477 kg
4	1	Nachfilter FCA 25		0,485 kg
5	1	Taupunktmessung		0,032 kg
6	1	Schaltpasten-DPS		0,382 kg



Option = Tauunktmessung  
option = dew-point measurement



A-A (1 : 2,5)



Anschlussgrößen / connection size		Größe / size	
Stutzen / nozzle	N1	Eintritt/inlet	3/8" BSP innen/female
	N2	Austritt/outlet	3/8" BSP innen/female
	N3	Kondensat/condensate	M10 innen/female
		Maßstab/scale	1:2,5
		Gewicht / weight	ca./app. 17 kg
		Benennung / designation	Adsorptionstrockner DPS 1
			adsorption dryer DPS 1
		Zeichnungs-Nr. / drawing no.	ZMP-S-100151
			1
			Δ1

